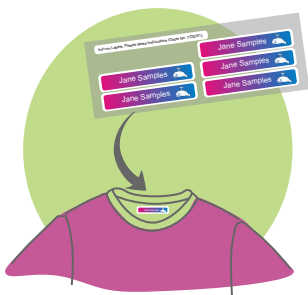


INSTRUCTIONS FOR IRON-ON LABELS

(THE IRON-ON LABELS HAVE A CLEAR BACKING PAPER)



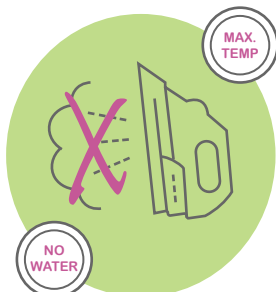
1. If the garment is new, wash and dry first



2. Peel the label off the clear backing paper



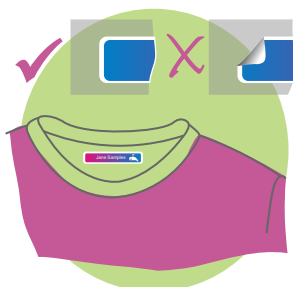
3. Place the label print side up onto the garment, place the protective sheet on top



4. Use a hot dry iron, turn the steam off



5. Apply a good amount of pressure for 8-15 secs. Allow garment to cool before removing protective sheet



6. Check all corners are stuck. Repeat if necessary